

# Let It Snow! ...Or Don't

2025-2026 Snow Season  
Presentation

---

Dan Merkh  
Public Works Director

# Winter 2024-2025 Season

Nov. 30 - 31

- Flurries and heavy snow fall
- Training

Jan. 4 - 7

- Sleet, Ice, snow (10 inches)
- Salt Treatment

Jan. 9 - 11

- On and Off snow Fall
- Low temperatures at Night causing Refreeze

Feb. 4 - 6

- Freezing Drizzle, black Ice
- Road temps below 32 at On Set

Feb. 11 - 13

- Heavy, wet snow into light dusting
- Forecast Shifted rapidly

Feb. 15

- Forecast called for Low chance of Heavy snow
- Pretreatment used, "ON CALL" crew was enacted

Feb. 17 - 19

- Dry snow, high winds
- Road temps below freezing, heavy drifting

Feb. 21

- Light snow
- High uncertainty, crews reported as needed

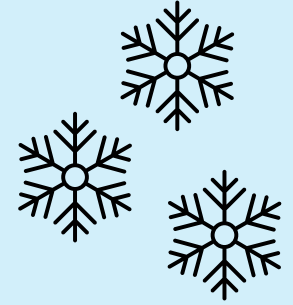


# When do we begin snow and ice control operations?

- Crews work 12-hour shifts
- Treatment methods determined by the forecast
- Public Works Director makes the call to begin operations
- We monitor road conditions using:
  - Weather or Not
  - Pavement temperature sensors; and
  - Visual inspection by Public Works

# Types of Response

Forecast Dependent



---

Proactive

Pretreatment based on forecast

Staff activation in advance of  
snowfall

---

Reactive

Staff activation based on conditions

---



# Snow Event Declaration

- Once two or more inches of snow has fallen, we can declare a “snow event”
- Municipal Code (Ch. 13, Art. 4, Sec. 406) requires all vehicles parked on City streets to be moved within two hours of a snow event declaration
  - The owners are responsible for any tow fees

# Notifications

- Direct alerts through Notify JoCo and posted on [edgertonks.org](https://edgertonks.org)
- Social media posts when vehicles must be removed from the street
- Sheriff's Office tows vehicles that are not moved

Notify JoCo



# How We Manage Snow & Ice

## Vehicles

- 6 1-ton Trucks
- One single-axle dump truck
- One tandem axle dump truck

## Chemicals

- Salt
- Brine



# What treatments do we use for snow and ice?

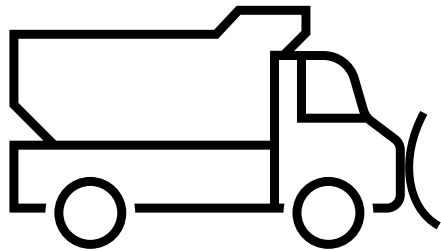


- Enhanced salt
  - Melts ice faster than other deicers
- Brine (calcium chloride)
  - Used for pre-treatment
  - Slows down the freezing by creating a barrier between the pavement and precipitation



# The Crew

# Plowing Procedure

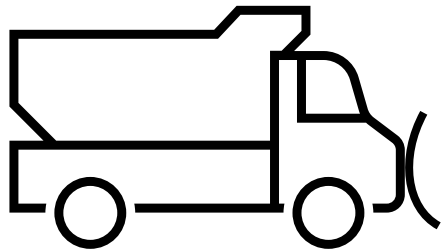


Roads are divided into 3  
priorities

Pri  
Major th  
with hig  
co

**Plows are not diverted from their routes, except in cases of fire  
or police emergencies**

# Plowing Procedure



## Priority 1

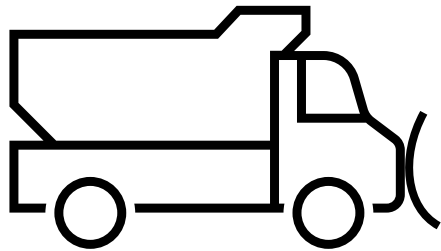
Major thoroughfares  
with higher traffic  
counts

Neighb

Pr

**Plows are not diverted from their routes, except in cases of fire  
or police emergencies**

# Plowing Procedure



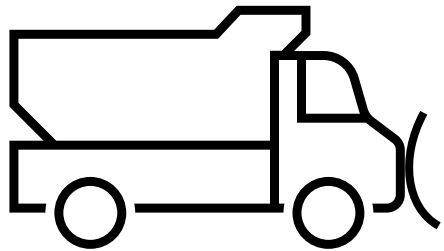
Priority 2

Neighborhood Roads

Culd-de-s  
&

**Plows are not diverted from their routes, except in cases of fire or police emergencies**

# Plowing Procedure



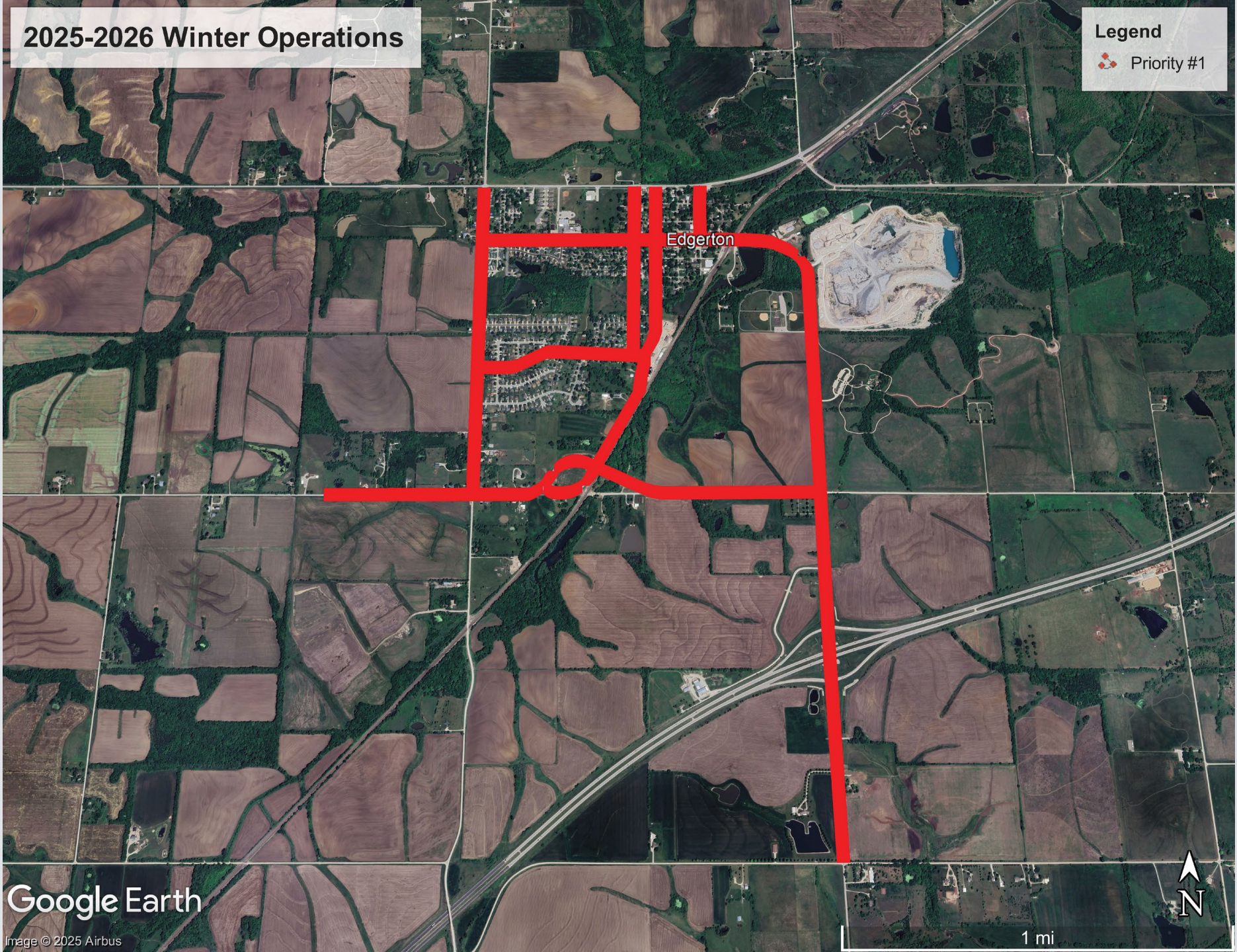
Priority 3  
Culd-de-sacs, dead ends  
& alleys

**Plows are not diverted from their routes, except in cases of fire or police emergencies**

# 2025-2026 Winter Operations

**Legend**

- Priority #1



Edgerton

Google Earth

Image © 2025 Airbus



1 mi

# 2025-2026 Winter Operations

Town Route #1

## Legend

- Priority #2
- Priority #3



Google Earth

Image © 2025 Airbus

Edgerton



4000 ft

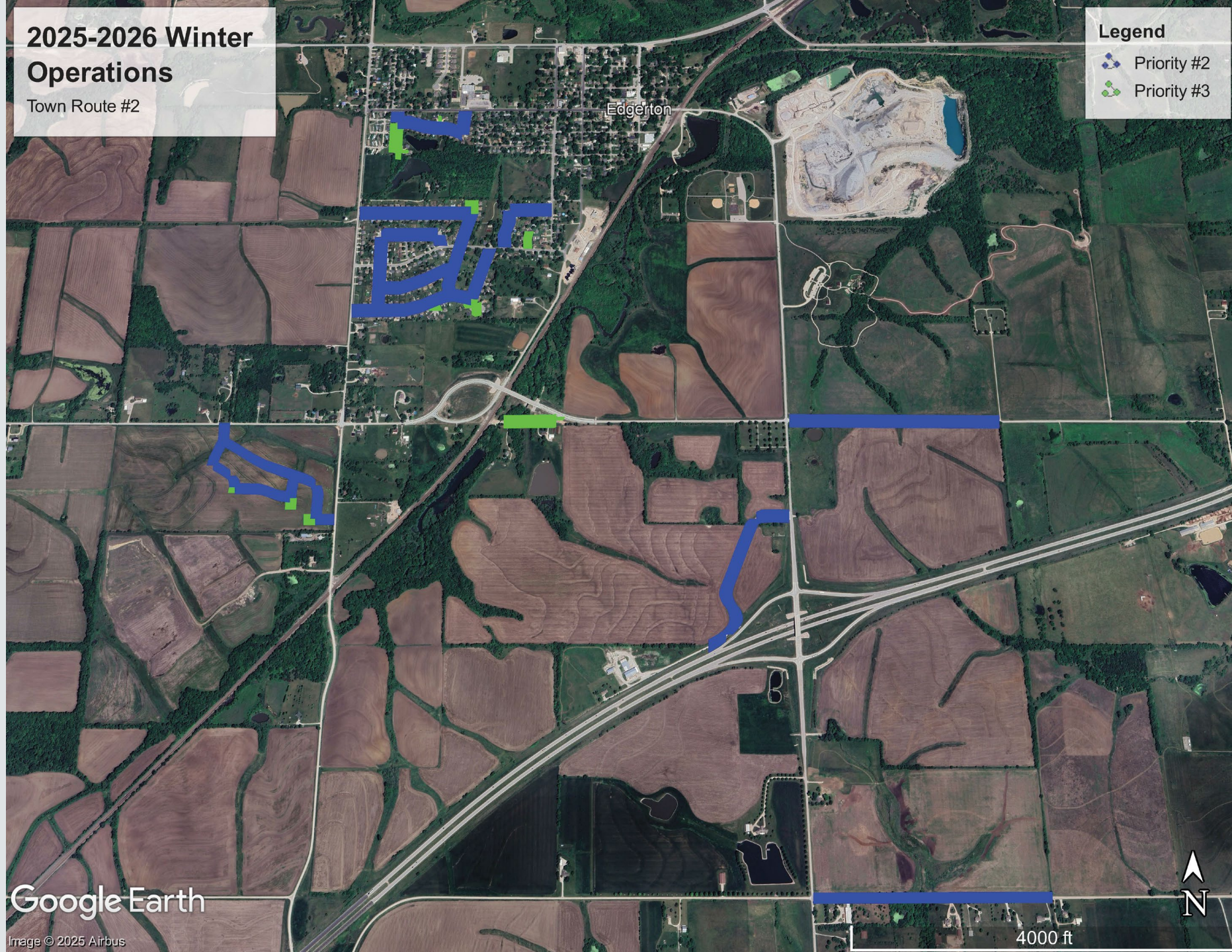


# 2025-2026 Winter Operations

Town Route #2

## Legend

-  Priority #2
-  Priority #3



Google Earth


Image © 2025 Airbus

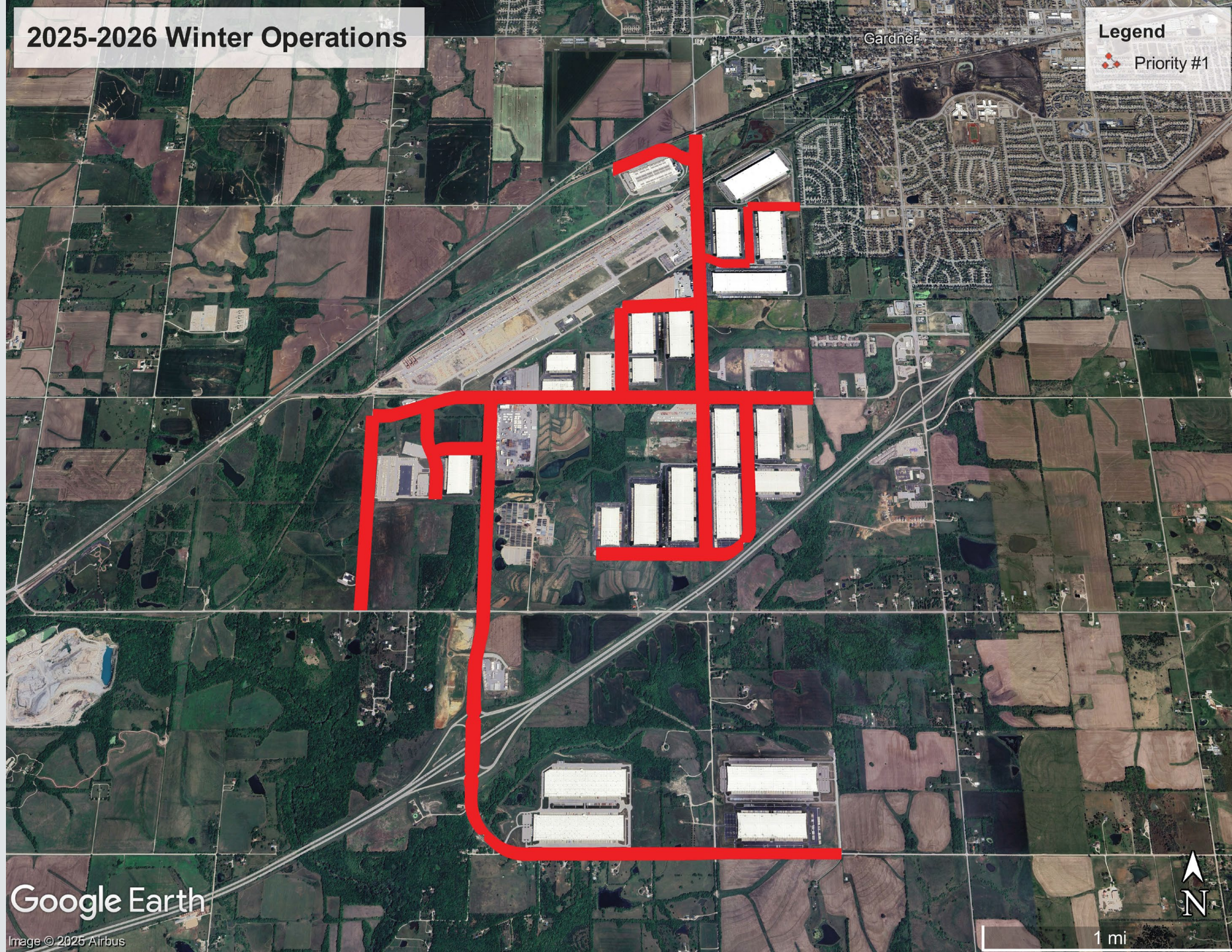
4000 ft



# 2025-2026 Winter Operations

Legend

 Priority #1



Google Earth

Image © 2025 Airbus




1 mi

# 2025-2026 Winter Operations

Gardner

## Legend

 Priority #1

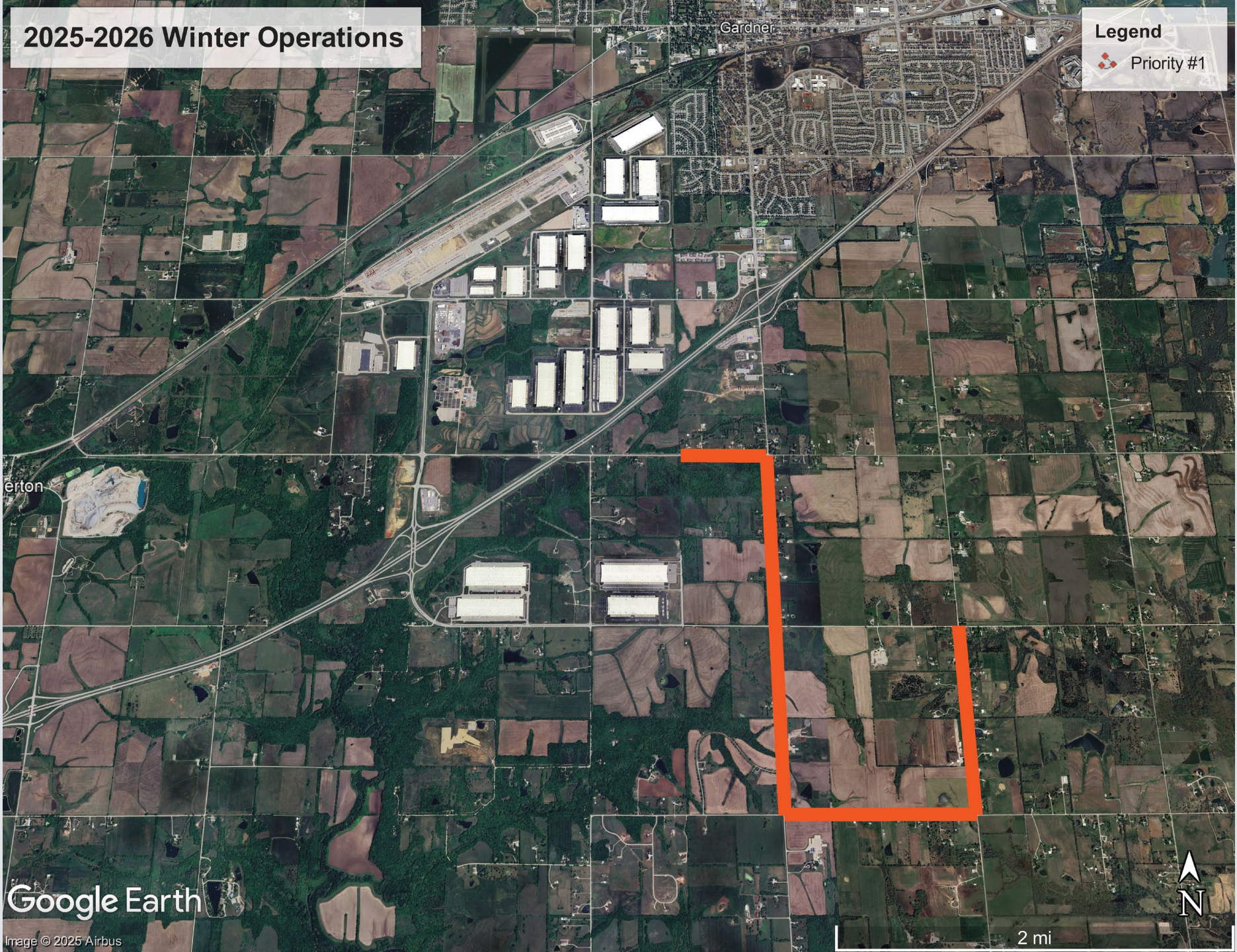
erton

Google Earth

Image © 2025 Airbus



2 mi



# 2025-2026 Winter Operations

**Legend**  
Priority #1



Google Earth

Image © 2025 Airbus

2 mi





## The Greenspace & City-cleared sidewalks and trails

A dedicated employee will be assigned to make sure the snow is clear around public buildings before they open.

- 12-hour shift focused on making sure the public can access City-owned spaces
- Similar procedure as roads with priorities focused on clear walking space from doors and emergency exits to parking spaces



# Clearing Sidewalks and Private Drives

- ▶ Residents are responsible for clearing sidewalks in front of their homes within 48 hours of the end of the winter weather event
- ▶ The City does not clear sidewalks, private driveways or parking lots
- ▶ Notification: City will declare the “end of snow event” to start the clock for residents to clear sidewalks

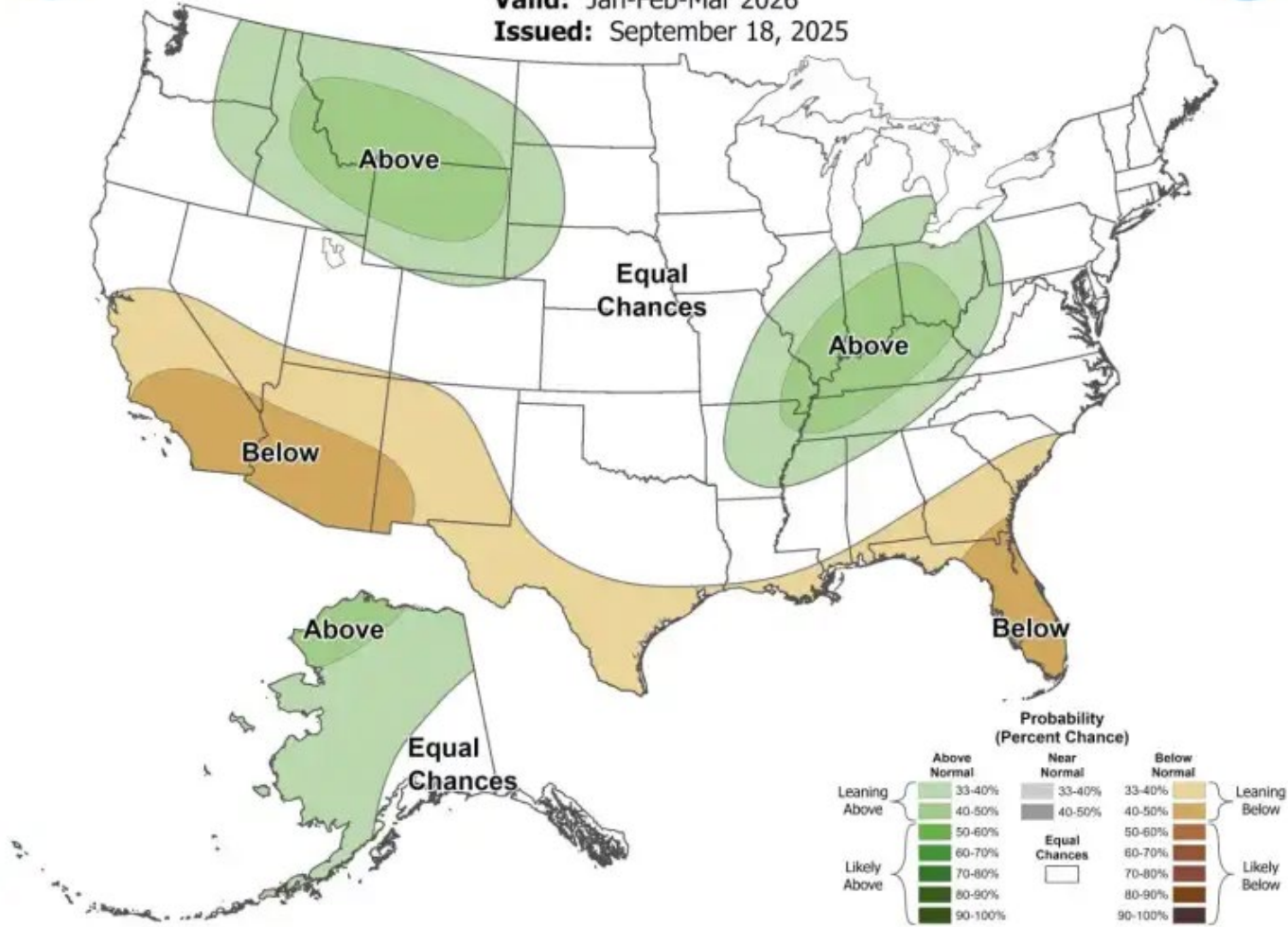


# Seasonal Precipitation Outlook



**Valid:** Jan-Feb-Mar 2026

**Issued:** September 18, 2025



What's to come?